

On the spot

Humanitarian crisis and satellite images

Camps for Syrian Refugees in Turkish Territory

A satellite image of a large, rectangular refugee camp in Turkey. The camp is densely packed with small, light-colored buildings arranged in a grid pattern. The camp is surrounded by a dark, possibly fenced or walled area. An orange callout box with a circular icon and a line pointing to a specific area within the camp is overlaid on the image.

See the Geo Report

Humanitarian crisis and satellite images

Camps for Syrian Refugees in Turkish Territory

The two refugee camps studied here appeared in July 2011 along the border between Syria and Turkey.

Imagery from the Pléiades and SPOT 5 satellites are the sources for this study of the evolution and organization of two Camps for Syrian Refugees in Turkey, produced by Airbus Defence and Space' team of expert photo-interpreters.

North Camp



South Camp



Situation





Humanitarian crisis and satellite images

North Camp

SPOT 5
30 May 2011

The camp zone is still
a crop field.

SPOT 5
25 July 2011

700 modular shelters
are...

Pléiades
28 november 2012

1,038 shelters have
been set up...





Humanitarian crisis and satellite images

North Camp

SPOT 5
30 May 2011

The camp zone is...

SPOT 5
25 July 2011

700 modular shelters are set up to house refugees and NGO logistics.

Pléiades
28 november 2012

1,038 shelters have been set up...





Humanitarian crisis and satellite images

North Camp

SPOT 5
30 May 2011

The camp zone is...

SPOT 5
25 July 2011

700 modular shelters are...

Pléiades
28 november 2012

1,038 shelters have been set up, the camp's layout changed and a wall erected around the triage area. Earthworks to the west are readying for the arrival of new refugees.



Sanitary facilities, stores and warehouses ring the camp

Logistics hangars in the centre of the camp

NGO facilities and triage area

Layout in 2011

Layout in 2012

Earthworks for built shelters



Humanitarian crisis and satellite images

North Camp

SPOT 5
30 May 2011

The camp zone is...

SPOT 5
25 July 2011

700 modular shelters are...

Pléiades
28 november 2012

1,038 shelters have been set up, the camp's layout changed and a wall erected around the triage area. Earthworks to the west are readying for the arrival of new refugees.

Sanitary facilities, stores and warehouses ring the camp

Logistics hangars in the centre of the camp

NGO facilities and triage area

Layout in 2011

Layout in 2012

Earthworks for built shelters





Humanitarian crisis and satellite images

South Camp

SPOT 5
30 May 2011

The camp zone is still
a crop field.

SPOT 5
25 July 2011

585 shelters and NGO
facilities...

Pléiades
28 november 2012

The camp appears to
have reached...





Humanitarian crisis and satellite images

South Camp

SPOT 5
30 May 2011

The camp zone is...

SPOT 5
25 July 2011

585 shelters and NGO facilities can be seen in the north-east area of the camp.

Pléiades
28 november 2012

The camp appears to have reached...





Humanitarian crisis and satellite images

South Camp

SPOT 5
30 May 2011

The camp zone is...

SPOT 5
25 July 2011

585 shelters and NGO facilities...

Pléiades
28 november 2012

The camp appears to have reached full capacity and no longer has enough space.

Sanitary facilities, stores and warehouses ring the camp

NGO facilities, triage area and logistics centre





Humanitarian crisis and satellite images

South Camp

SPOT 5
30 May 2011

The camp zone is...

SPOT 5
25 July 2011

585 shelters and NGO facilities...

Pléiades
28 november 2012

The camp appears to have reached full capacity and no longer has enough space.

Sanitary facilities, stores and warehouses ring the camp

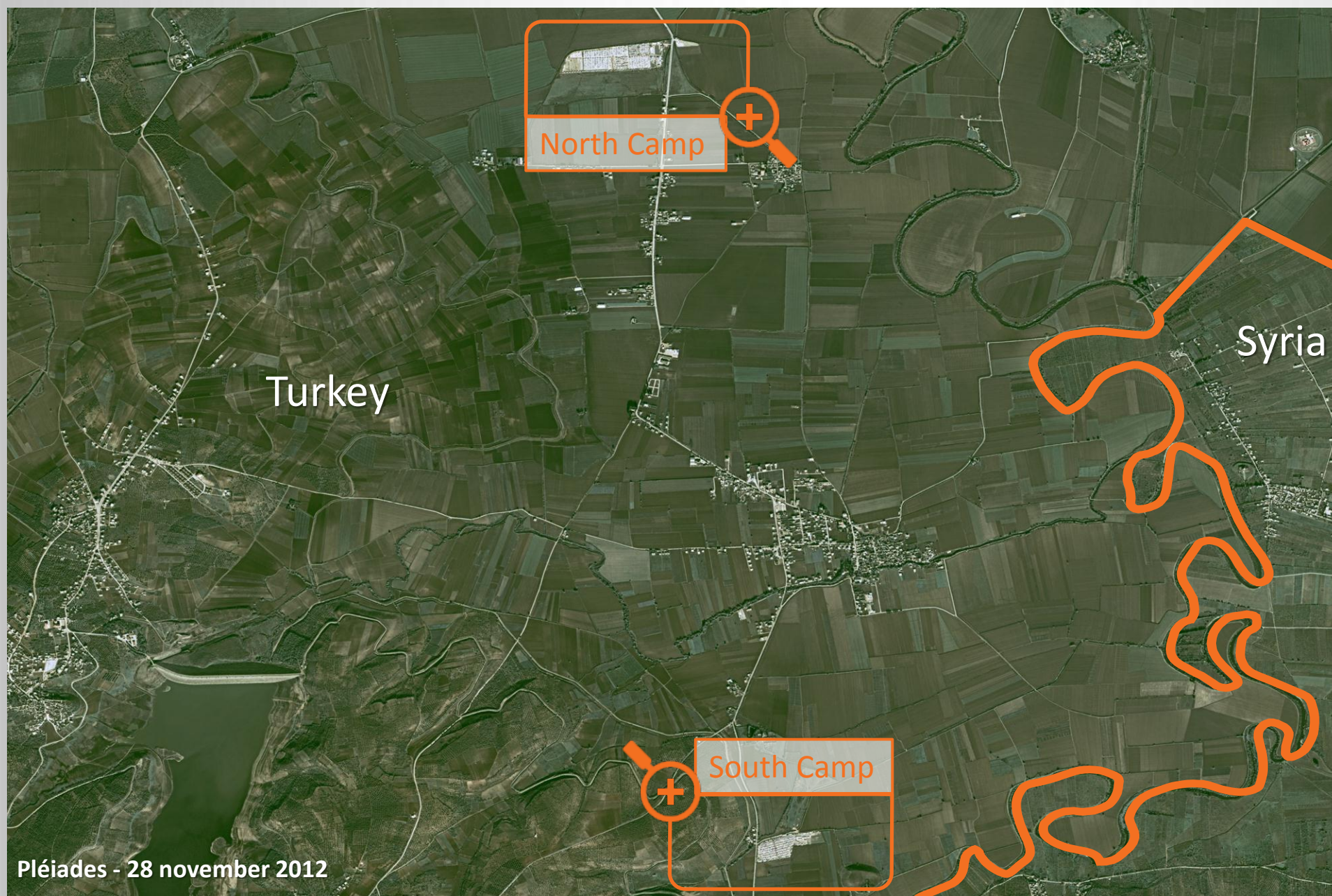
NGO facilities, triage area and logistics centre





Humanitarian crisis and satellite images

Situation



The HCR estimates that by autumn 2012 there were over 60,000 Syrian refugees in Turkey. The eight existing camps are continuing to expand. The Turkish government sets up four new camps.

In the farmland plain of the Turkish province of Hatay, the camps are located between the two largest towns in the region, 70 km west of the Syrian city of Aleppo and 20 km from the Turkish town of Antioch.

The two refugee camps studied here appeared in July 2011, shortly after the siege of the towns of Daraa, Homs and Hama.

GEO Report - Humanitarian crisis and satellite images

Camps for Syrian Refugees in Turkish Territory

© Airbus Defence and Space 2013

Satellite imagery:

SPOT 5 images of 30 May 2011 and 25 July 2011 - © **CNES 2011** - Distribution Astrium Services / Spot Image

Pléiades 1A image of 28 November 2012 - © **CNES 2012** - Distribution Astrium Services / Spot Image

Photo-interpretation and copywriting: Philippe Mateu

Imagery intelligence coordinator: Christine Isaac

Graphic design: Laurent Demay

Webmaster: Noël Christ

Publication coordinator: Pascal Michel

Airbus Defence and Space - GEO-Information

5, rue des Satellites

BP 14 359

F 31030 Toulouse cedex 4

France

Phone : +33 (0)5 62 19 40 40 | Fax : +33 (0)5 62 19 40 11

Web: www.astrium-geo.com | [Contact Us](#)



| [Situation](#) | [North Camp](#) | [South Camp](#)